

COVID-19 VACCINE: Priority Groups for Phase 1

- + **Frontline Healthcare Workers**
(working in an emergency department, ICU, COVID unit, or general acute care)
- + **Long-Term Care Facility Healthcare Workers**

A



B

- + **Long-Term Care Residents** *(nursing home and assisted living)*

we are here

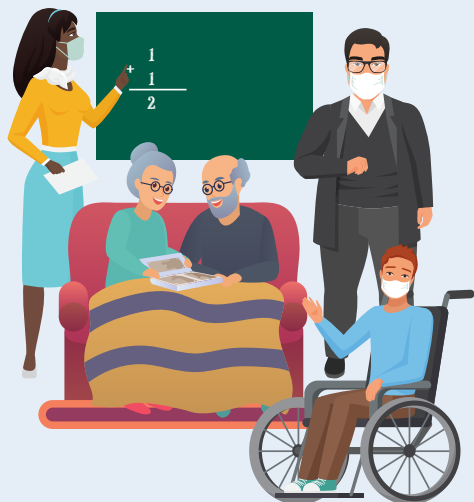
- + **Other healthcare workers, including laboratory and clinic staff**
- + **Public Health Workers**
- + **Emergency Medical Services**
- + **Law Enforcement**
- + **Correctional Officers**

C



D

- + **Persons with 2 or More Underlying Medical Conditions** *(cancer; chronic kidney disease; COPD); Heart Conditions, such as heart failure, coronary artery disease, or cardiomyopathies; Immunocompromised State (weakened immune system) from solid organ transplant; Obesity or Severe Obesity; Sickle Cell Disease; Type 2 Diabetes Mellitus*
- + **Teachers and Other School/College Staff**
- + **Persons Aged 65 Years and Older**
- + **Residents in Congregate Settings, Residents in Licensed Independent Living Facilities, and Residents of Licensed Group Homes**
- + **Funeral Service Workers**



- + **Fire Service Personnel**
- + **Other Critical Infrastructure Workers, including water and wastewater, energy, finance, food service, food and agriculture, legal, manufacturing, shelter and housing, transportation and logistics, information technology and communications**

E



[Click for More Information on Critical Infrastructure Sectors](#)

Due to limited allocation of the vaccine, the South Dakota Department of Health will use COVID-19 infection rates and will follow recommendations from the Advisory Committee on Immunization Practices (ACIP) to guide which counties will receive the vaccine first.



SOUTH DAKOTA DEPARTMENT OF HEALTH

covid.sd.gov

COVID-19 Vaccine

Expected Vaccine Availability in South Dakota

Phase	Population Group	January	February	March	April	May-December
1A	Frontline healthcare workers and long-term care facility healthcare workers	■	■	■	■	■
1B	Long-term care residents	■	■	■	■	■
1C	EMS, public health workers, and other healthcare workers (<i>lab & clinic staff</i>)	■	■	■	■	■
	Law enforcement, correctional officers	■	■	■	■	■
1D	Persons with 2 or more underlying medical conditions	■	■	■	■	■
	Persons aged 65 years and older	■	■	■	■	■
	Residents in congregate settings	■	■	■	■	■
	Teachers and other school/college staff	■	■	■	■	■
	Funeral service workers	■	■	■	■	■
1E	Fire service personnel	■	■	■	■	■
	Includes public-facing workers in essential and critical infrastructure	■	■	■	■	■
Phase 2	All others 16 years and older	■	■	■	■	■

■ Estimated Vaccine Availability

Due to limited allocation of the vaccine, the South Dakota Department of Health will use COVID-19 infection rates and will follow recommendations from the Advisory Committee on Immunization Practices (ACIP) to guide which counties will receive the vaccine first.



SOUTH DAKOTA DEPARTMENT OF HEALTH

covid.sd.gov